



Building



BUILDING

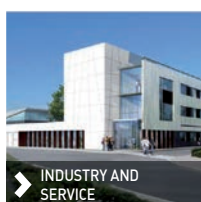
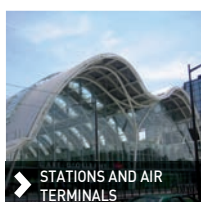
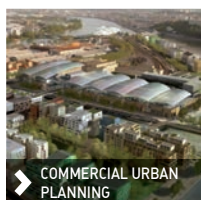
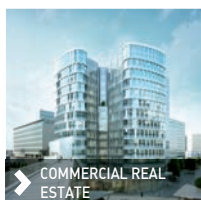
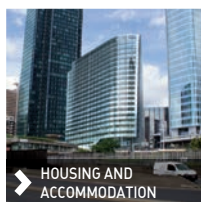
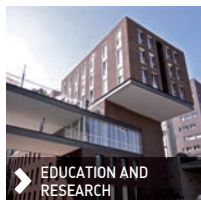


Engineering close to its customers, a partner for all kinds of jobs, equipped with the most modern tools and focusing on cutting-edge techniques.

BUILDING, A TRADITIONAL TRADE FOR INGÉROP, A LEADER IN ITS FIELD



A VERY BROAD RANGE OF ACTIVITIES



A SET OF TECHNICAL SKILLS

- ▶ Project management
- ▶ Geotechnics, hydraulics, roads, networks
- ▶ Structural engineering (concrete, wood, metal, glass)
- ▶ Envelope and façades design
- ▶ Thermal engineering - Fluids
- ▶ Electrical engineering
- ▶ Smart building
- ▶ BIM management
- ▶ Quantity surveying services
- ▶ Environmental engineering
- ▶ Energy optimization
- ▶ Fire prevention
- ▶ Accessibility for the disabled
- ▶ Safety survey



TASKS AT ALL PROJECT STAGES

- ▶ Assistance and Consulting
 - Technical audits, analyses, due diligence
 - Assistance for Official Bodies
 - Assistance for Project Owners
 - Advisory services for investors and lenders
 - Assistance in operation and maintenance
- ▶ Engineering
 - Management, project supervision
 - Prime contracting (design, construction monitoring)
 - Technical design (inception, schematic, concept and detailed design)
 - Construction design
 - Technical coordinated studies
 - Construction supervision



> **Pasteur Hospital II (Nice)**
Arch. Reichen et Robert et Associés

Advanced technologies and equipment combined with a mastery of hygienic aspects accompanying functional architecture in the interest of an efficient offering in the health field.



> **West Guiana Hospital (St-Laurent-du-Maroni)**
Arch. Barbosa-Vivier / BDN / B. Castiau

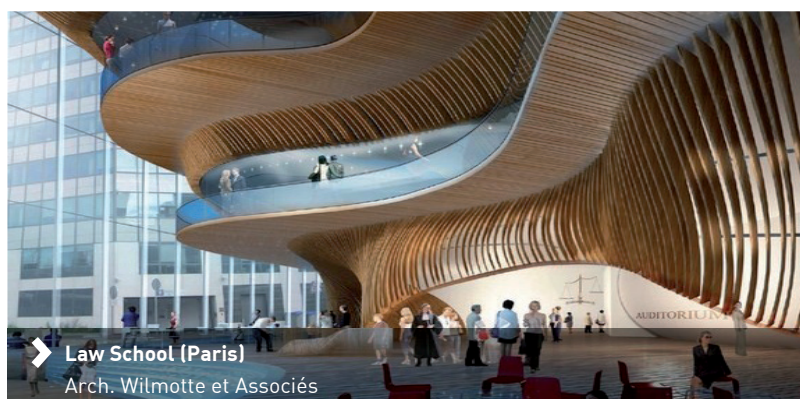


> **Hautepierre Hospital (Strasbourg)**
Arch. Groupe 6

EDUCATION AND RESEARCH



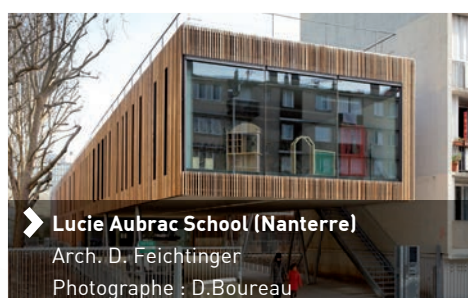
> **Imagine Institute (Paris)**
Arch. Ateliers J.Nouvel / Agence BVFG



> **Law School (Paris)**
Arch. Wilmotte et Associés



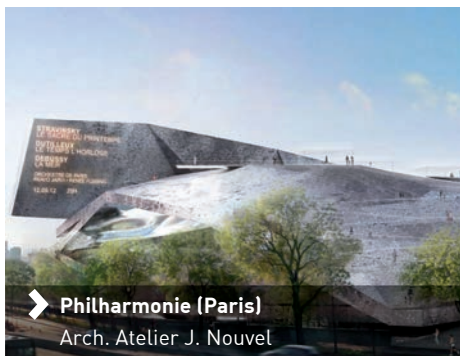
> **Languages and Civilisations Center (Paris)**
Arch. Ateliers Lion



> **Lucie Aubrac School (Nanterre)**
Arch. D. Feichtinger
Photographe : D.Boureau

From the most sophisticated installations and equipment to the most modern communication tools in the interest of acquisition of knowledge and its transmission.

CULTURE, SPORTS AND LEISURE-TIME ACTIVITIES



➤ **Philharmonie (Paris)**
Arch. Atelier J. Nouvel



➤ **Musical Center of Hauts-de-Seine (Boulogne-Billancourt)**
Arch. Shigeru Ban / J. de Gastines

➤ Pleasure and high use quality for facilities relative to leisure, creativity and effort within a framework meeting regulatory, economic and technical requirements.



➤ **Léo Lagrange Stadium (Toulon)**
Arch. A5 / C+H+ / B. Huidobro

HOUSING AND ACCOMODATION



➤ **Hotel MELIA (La Défense)**
Arch. Vasconi Architectes

➤ Deployment of all types of skills in the interest of creating modern and comfortable living facilities in spite of tough economic conditions and a strict regulatory context



➤ **Les Champs de l'Arche (Nanterre)**
Arch. F. Dusapin



➤ **Terre Neuve (Bordeaux - Bègles)**
Arch. Brochet - Lajus - Pueyo

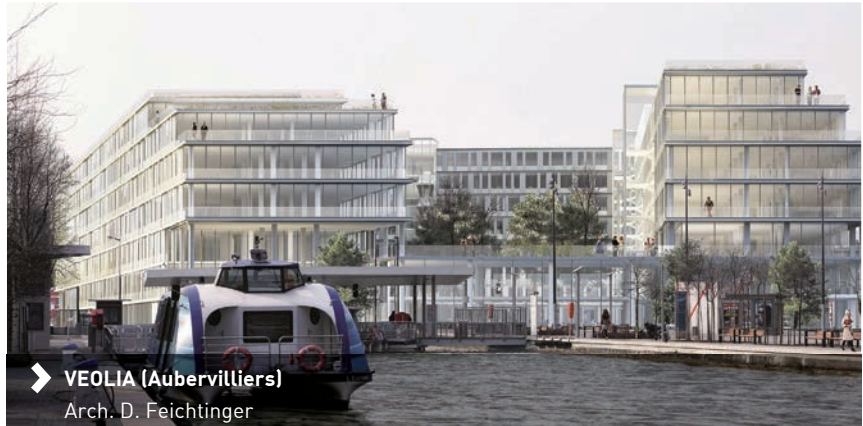
COMMERCIAL REAL ESTATE

INGEROP ➤ Building



➤ **Arago Tower (La Défense business district)**
Arch. Atelier C. de Portzamparc

➤ A global approach and integrated design respectful of the environment and contribute to renewal of the tertiary facilities, labelling, and numerous and varied certifications.



➤ **VEOLIA (Aubervilliers)**
Arch. D. Feichtinger



➤ **SCOR (Budapest Place, Paris)**
Arch. Bechu et F. Leclercq

COMMERCIAL URBAN PLANNING



➤ **Confluences Shopping Center (Lyon)**
Arch. JP. Viguier et Associés

➤ Expert knowledge of reliable concepts and solutions of lasting value so as to create the conditions for easy maintenance and economically attractive operation.



➤ **Les Terrasses du Port (Marseille)**
Arch. 4A



➤ **La Canopée - Les Halles (Paris)**
Arch. P. Berger et J. Anziutti

STATIONS AND AIRPORTS



➤ **Lyon Saint-Exupéry Airport (France)**
Arch. RSHP / Chabanne



➤ **Orléans Train Station (France)**
Arch. AREP

➤ More than mere workplaces or transit areas: living surroundings with complex structures and controlled ambience.



➤ **Geneva International Airport (Switzerland)**
Arch. RSHP / J. Bugna

INDUSTRY AND SERVICES



➤ **French Oil Institut (Lyon - Solaize)**
Arch. TECTUS



➤ **Joseph Szydlowski New Plant (Pau - Bordes)**
Ach. Brunerie et Irissou

➤ Ergonomics, processes and utilities, choices and technical solutions as keys to industrial performance.



➤ **URBALAD Michelin Research Centre (Clermont-Ferrand)**
Arch. Chaix et Morel et Associés

An innovative
and pioneering
commitment to
use the most
modern tools.

FROM CAD TO BIM

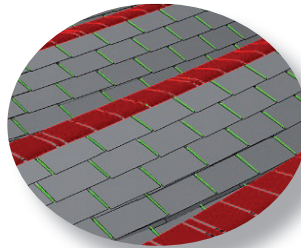
Geometric design

The "Canopée" (an emblematic
huge project in the very center
of Paris)



Choice of materials

Calepinage of the
canopée's glazing

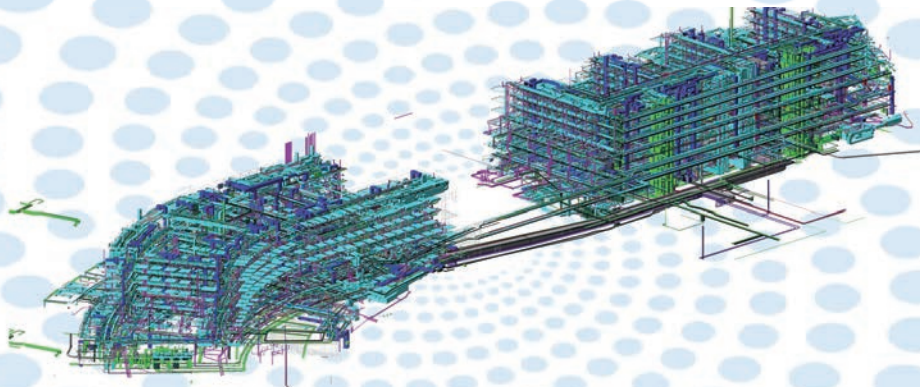


Amenities qualification

Operating rooms



TECHNICAL INTEGRATION



DIGITAL MODELING BIM

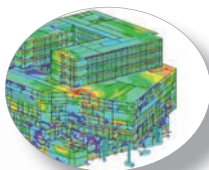
Dimensionning

Canopée's gantries



Computer model

Stress model for
Hautepierre



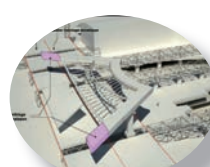
Documentation

CM A16 plans



Construction

simulation



Maintenance

Coordinated
network rendering
Hautepierre

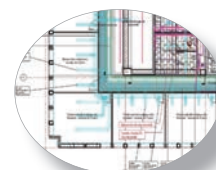


Illustration Printing and 3D Projection

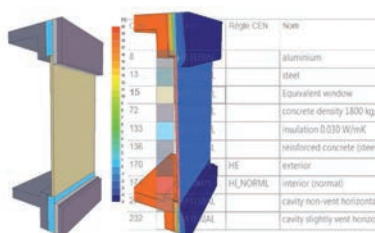
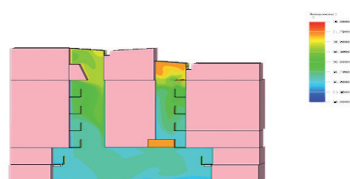


Ingerop, a driving force and a contributor to the energy transition as applied to building

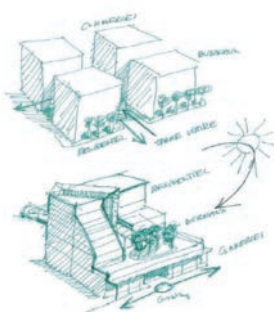
ENERGY TRANSITION



- From the development of renewable energies to the smart grid, Ingérop applies all skills dedicated to high-performance building projects.



- Optimization of building envelopes and of flow regulation systems in the interest of cutting total costs and of high energy efficiency.



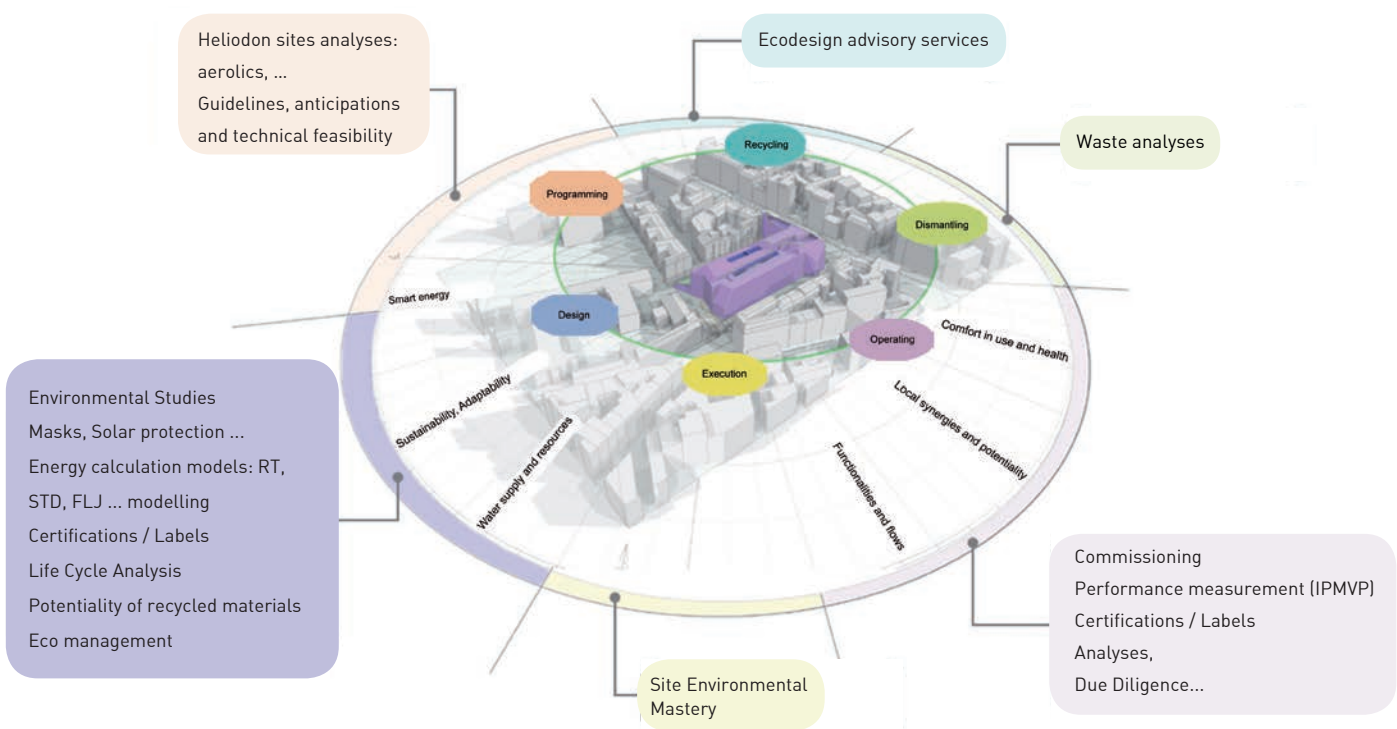
- Ingérop is a founding member of Efficacy, the institute for urban energy transition, accredited by the French National Research Agency and is financed as part of the investments for the future. In this effort Ingérop mobilises its technical creativity and the strength of its innovation to the benefit of the "Bâtiville" research project, dedicated to the energy efficiency and autonomy of future urban blocks.



Preservation of
our planet and of
future generations is
of vital importance
to Ingérop.

SUSTAINABLE DEVELOPMENT

To guarantee this ecological transition, Ingerop offers solutions that are technically mastered and economically viable, responses adapted to user expectations with proper respect for the environment.



INTEGRAL
concept

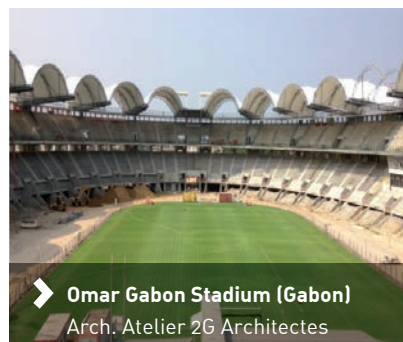
➤ Integral Concept combines all types of Ingérop know-how in the service of this cause:

- Environmental assistance for Project Owners and Designers
- Management of change (customs and ways of life)
- Participative Research and Development (Life Cycle Analysis, High Environmental Quality, energy efficiency)

➤ At every level, Ingérop invites engineering, architecture and city planning to associate their creativity in the interest of a concrete approach to sustainable development.

Diversified
projects
on several
continents.

INTERNATIONAL PROJECTS



> French know-how, exported to an ever increasing extent.

> Service that adapts to all contexts.



5 BUSINESS SEGMENTS AND TASKS AT ALL PROJECT STAGES

INFRASTRUCTURES



- ▶ Linear infrastructure (rail, expressway and other roads, and waterway)
- ▶ Bridges
- ▶ Geotechnical structures
- ▶ Urban development
- ▶ Facilities
- ▶ Environment
- ▶ General Studies

WATER & ENVIRONMENT



- ▶ Road and river hydraulic engineering
- ▶ Maritime and coastal engineering
- ▶ Urban and industrial engineering
- ▶ Environment

URBAN PLANNING & TRANSPORTATION



- ▶ Reconciling development and sustainable transport
- ▶ Metro, tram, tram-train, trolley, high level service bus
- ▶ River shuttles, soft modes of transport
- ▶ Equipment and systems

ENERGY & INDUSTRY



- ▶ Industrial building
- ▶ Nuclear
- ▶ Aeronautics
- ▶ Telecom and data centres
- ▶ Agribusiness
- ▶ Chemicals
- ▶ Pharmaceuticals
- ▶ Auto industry
- ▶ Defense
- ▶ Building and industrial process

BUILDING



- ▶ Educational and research premises
- ▶ Hospitals and health establishments
- ▶ Sports, cultural & leisure-time equipment
- ▶ Commercial real estate
- ▶ Commercial urban planning
- ▶ Housing and accommodation
- ▶ Public works and transport
- ▶ Industry and services



<p>Toulouse exhibition Park <i>OMA - Rem Koolhaas C. Blanchet</i></p>	<p>La Canopée (Paris) <i>P. Berger - J. Anziutti</i></p>	<p>Alto Tower (La Défense) SRA <i>Architectes Interfaces architectes</i></p>
<p>Pointe-à-Pitre Hospital <i>Architecture Studio BABEL A. Nicolas</i></p>	<p>Geneva International Airport (Switzerland) <i>Rogers Stirk Harbour and Partners / J. Bugna</i></p>	



Building

168/172, boulevard de Verdun
92408 COURBEVOIE cedex - France
Tél. +33 1 49 04 58 50 - Mobile : +33 6 03 78 60 74
thierry.lafont@ingerop.com
ingerop.com

